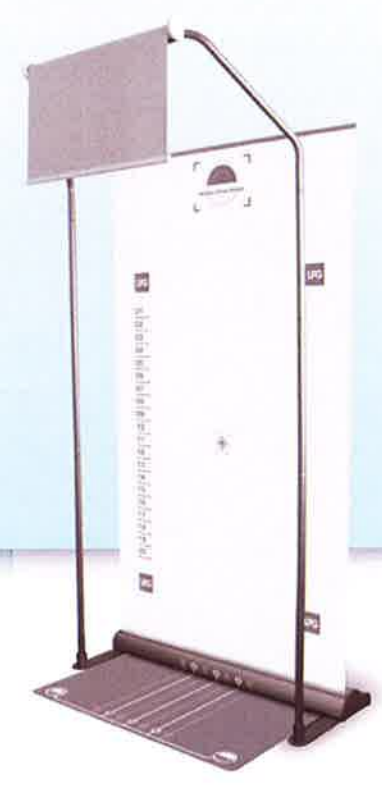


Résultats / Results  
Lipomodélage™  
BY ENDERMOLOGIE®



Résultats / Results  
**Lipomodelage™**  
 BY ENDERMOLOGIE



Le conseiller beauté réalise la Lipo-évaluation photographique des surcharges :  
 Le patient est photographié debout, femme en string LPG, homme en sous-vêtement grâce à l'Endermologie Photo System, de face et de dos :

- Pour localiser les zones à Lipomodeler
- Pour évaluer la fermeté des tissus
- Pour envisager les plis à redessiner
- Pour repérer les asymétries

Il évalue ainsi, sous l'effet de la pesanteur, les zones à traiter prioritairement, en accord avec le patient.

*Practitioners must perform a thorough Lipoevaluation of problem areas, requiring a mandatory front and back Lipo-evaluation. Clients will be instructed to stand upright in a thong panty (female) or underwear (men) for a front and rear photograph; this photographic examination:*

- Locates problem areas
- Evaluates tissue firmness
- Defines fat bulges to be resculpted
- Identifies body asymmetries

*This position allows the practitioner and his clients to determine, under gravity, the areas that will be treated in priority*





**CELLU M6® KEYMODULE S**

La technologie de référence de traitement du tissu conjonctif. Il est équipé de rouleaux indépendants motorisés.

*The professional gold standard of care, this health, beauty and wellness technology integrates independent motorized rollers for tri-dimensional tissue stimulation.*



**LIPO M6®**

Version exclusivement esthétique, le Lipo M6 rend le Lipomodelage accessible au plus grand nombre.

*Featuring independent motorized rollers for tri-dimensional tissue stimulation, this technology is designed exclusively for Lipomodelage.*



**CELLU M6® KEYMODULE [2] S**

Dernière évolution du Cellu M6 Keymodule. Cet appareil intègre en plus de la technologie Roll, la technologie Lift pour traiter le visage (surcharge, rides, relâchement...)

*With expanded, pre-programmed Lipomodelage body sculpting and Facialfitness redensification face and body treatments, the advanced Keymodule II integrates independent motorized rollers and flap technology for tri-dimensional tissue stimulation.*

Résultats / Results  
**1** Lipomodelage™  
BY ENDERMOLOGIE®



0




12

 AGE 28 ans / years

 ROLL IN 40%

 ROLL UP 50%

 ROLL OUT 10%

Résultats / Results  
**2** Lipomodelage™  
BY ENDERMOLOGIE®



0



14

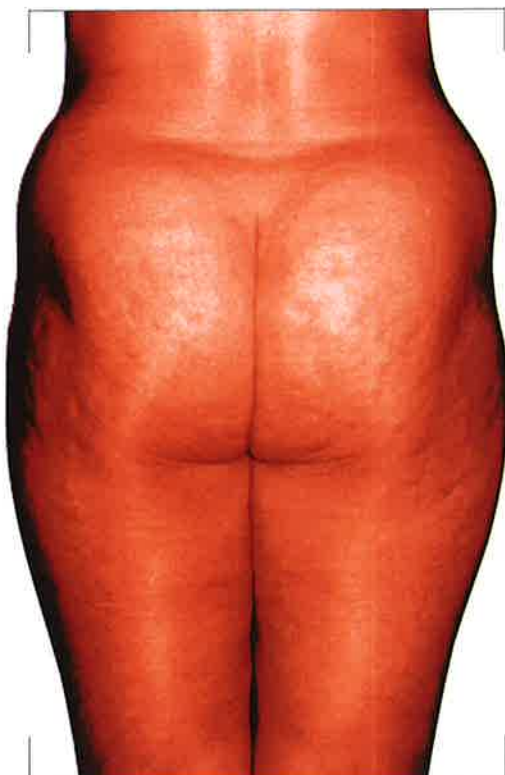
 AGE 38 ans / years

 ROLL IN 50%

 ROLL UP 40%

 ROLL OUT 10%

Résultats / Results  
**3** Lipomodelage™  
BY ENDERMOLOGIE®



0



14



AGE

48 ans / years



ROLL IN

40%



ROLL UP

40%



ROLL OUT

20%

Résultats / Results  
**4** Lipomodelage™  
BY ENDERMOLOGIE®



0



14



AGE

30 ans / years



ROLL IN

30%



ROLL UP

50%



ROLL OUT

20%

Résultats / Results  
5 Lipomodelage™  
BY ENDERMOLÓGIE®



0



7



AGE

48 ans / years



ROLL IN

50%



ROLL UP

30%



ROLL OUT

20%


Résultats / Results  
6 Lipomodelage™  
BY ENDEMIROCIE®



0



12

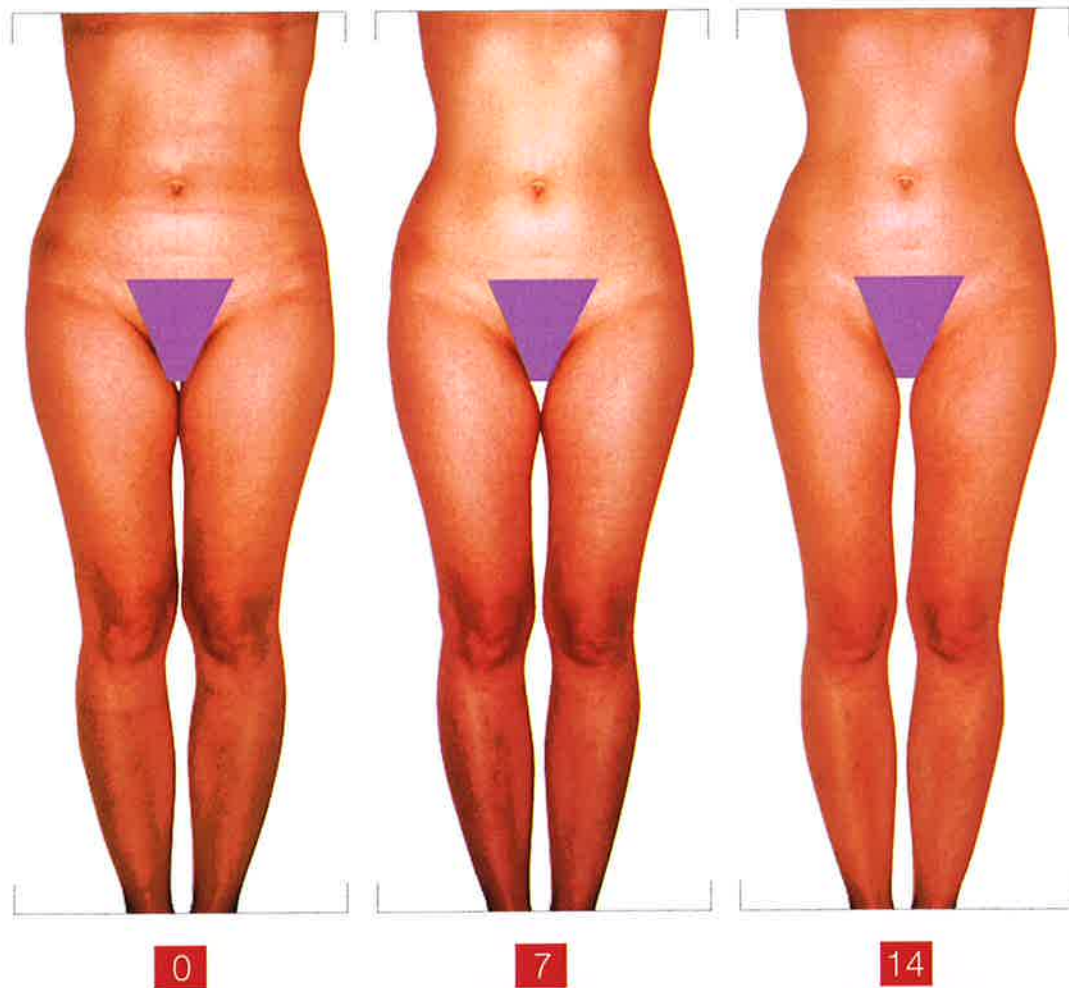
 AGE / 30 ans / years

 ROLL IN / 60%

 ROLL UP / 30%

 ROLL OUT / 10%

Résultats / Results  
**7** Lipomodelage™  
BY ENDERMOLOGIE®



 AGE / 30 ans / years

 ROLL IN / 33%

 ROLL UP / 33%

 ROLL OUT / 33%

Résultats / Results  
8 Lipomodelage™  
BY ENDERMOLOGIE™



0



9



0



9

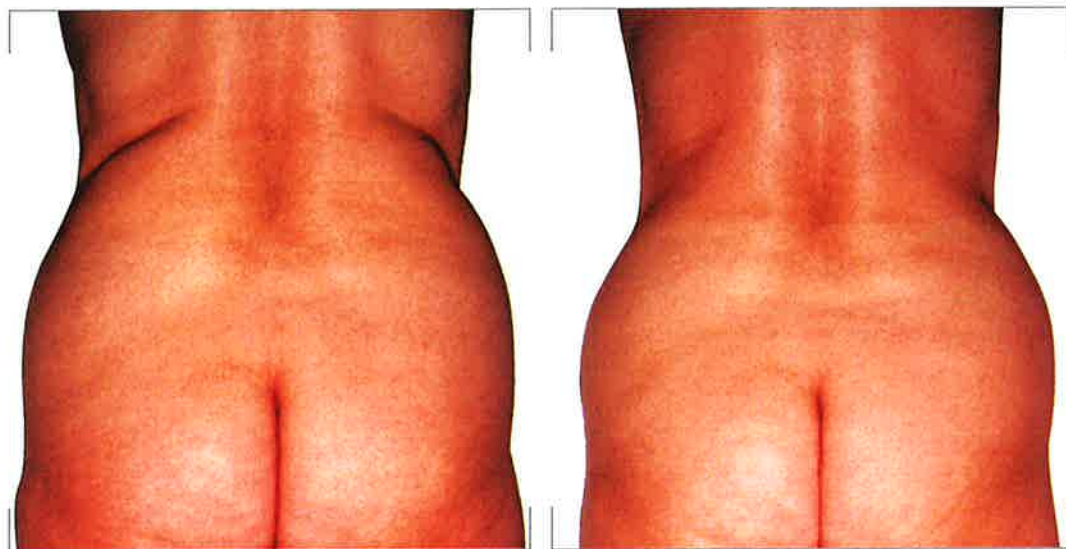
AGE 46 ans / years

ROLL IN 10%

ROLL UP 50%

ROLL OUT 40%

Résultats / Results  
9 Lipomodelage™  
BY ENDERMOLOGIC



0

5



AGE

41 ans / years



ROLL IN

60%



ROLL UP

20%



ROLL OUT

20%

Résultats / Results  
**Lipomodelage**  
BY ENDERMOLGIE

10



0



7



AGE

39 ans / years



ROLL IN

30%



ROLL UP

50%



ROLL OUT

20%

Résultats / Results  
**11** Lipomodelage<sup>®</sup>  
BY ENDERMOLOGIE



11  
42  
43

AGE

26 ans / years

0

8



ROLL IN

40%



ROLL UP

40%



ROLL OUT

20%

Résultats / Results  
12 Lipomodelage™  
BY ENDERMOLOGIE®



0

8



AGE / 34 ans / years



ROLL IN / 40%



ROLL UP / 40%



ROLL OUT / 20%

Résultats / Results  
**13** Lipomodelage™  
BY ENDERMOLOGIE®



0



5



AGE

46 ans / years



ROLL IN

50%



ROLL UP

30%



ROLL OUT

20%

Résultats / Results  
**Lipomodelage™**  
BY ENDERMOLOGIE®

13



0



5



AGE

46 ans / years



ROLL IN

50%



ROLL UP

30%



ROLL OUT

20%

Résultats / Results  
**Lipomodelage**  
BY ENDOLOGIE

14



0



10



AGE

24 ans / years



ROLL IN

60%



ROLL UP

30%



ROLL OUT

10%

Résultats / Results  
**Lipomodelage™**  
BY ENDERMOLOGIE

15



0



6

42  
43

AGE

35 ans / years

ROLL IN

ROLL IN

30%

ROLL UP

ROLL UP

30%

ROLL OUT

ROLL OUT

40%

Résultats / Results  
**Lipomodelage™**  
BY ENDERMOLOGIC®

16



42  
43

AGE

52 ans / years

0

4



ROLL IN

30%



ROLL UP

40%



ROLL OUT

30%

Résultats / Results  
17 Lipomodelage™  
BY ENDERMOLOGIE®



AGE

38 ans / years



ROLL IN

20%



ROLL UP

50%



ROLL OUT

30%

Résultats / Results  
**18** Lipomodelage™  
BY ENERMOLOGIE®



0



9



AGE / 55 ans / years



ROLL IN / 80%



ROLL UP / 0%



ROLL OUT / 20%

Résultats / Results  
**Lipomodelage™**  
BY ENDERMOLOGIE


19



 AGE 32 ans / years

 ROLL IN 50%

 ROLL UP 30%

 ROLL OUT 20%

Résultats / Results  
**Lipomodelage™**  
BY ENDOFACIOLIGIE



0



15



AGE

60 ans / years



ROLL IN

50%



ROLL UP

20%



ROLL OUT

30%

Résultats / Results  
**21** Lipomodelage™  
BY ENDOERMOLÓGIE®



0



10



AGE

30 ans / years



ROLL IN

100%



ROLL UP

0%



ROLL OUT

0%

Résultats / Results  
22 Lipomodelage<sup>TM</sup>  
BY ENDERMOLOGIE<sup>®</sup>



 AGE / 35 ans / years

 ROLL IN / 40%

 ROLL UP / 40%

 ROLL OUT / 20%

Résultats / Results  
**Lipomodelage™**  
BY ENDERMOLÓGIE®



AGE

53 ans / years



ROLL IN

50%



ROLL UP

30%



ROLL OUT

20%

Résultats / Results  
**Lipomodelage™**  
BY ENDERMOLOGIE

24



0



2



AGE

50 ans / years



ROLL IN

60%



ROLL UP

10%



ROLL OUT

30%

Résultats / Results  
**Lipomodelage™**  
BY ENDERMOLOGIE®

25



AGE

38 ans / years

0

14



ROLL IN

50%



ROLL UP

40%

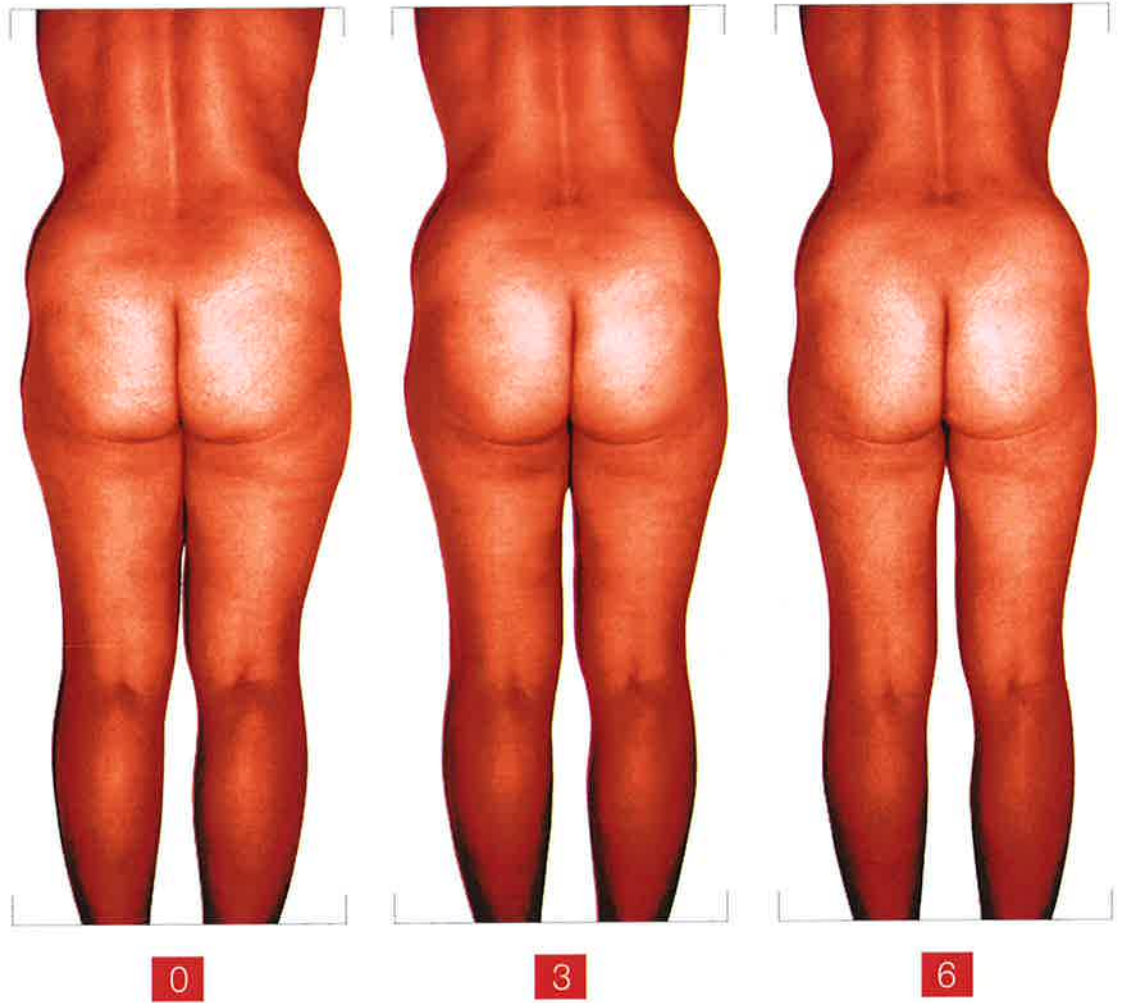


ROLL OUT

10%

Résultats / Results  
**Lipomodelage™**  
BY ENERMOLOGIE®

26



AGE

28 ans / years



ROLL IN

60%



ROLL UP

30%



ROLL OUT

10%

Résultats / Results  
**Lipomodelage™**  
BY ENDERMOLOGIE®

27



0

10



AGE

60 ans / years



ROLL IN

40%



ROLL UP

30%



ROLL OUT

30%

Résultats / Results  
**Lipomodelage**<sup>TM</sup>  
BY ENDERMOLOGIE<sup>®</sup>

28



AGE

28 ans / years



ROLL IN

60%



ROLL UP

30%



ROLL OUT

10%

Résultats / Results  
29 Lipomodelage<sup>TM</sup>  
BY ENDERMOLOGIE<sup>®</sup>



-  AGE / 40 ans / years
-  ROLL IN / 30%
-  ROLL UP / 50%
-  ROLL OUT / 20%

Résultats / Results  
**Lipomodelage™**  
BY ENDERMOLOGIE®



42  
43

AGE

42 ans / years

0

14

ROLL IN

ROLL IN

20%

ROLL UP

ROLL UP

50%

ROLL OUT

ROLL OUT

30%

Résultats / Results  
**Lipomodelage™**  
BY ENDERMOLOGIE®

31



0



10



AGE

33 ans / years



ROLL IN

60%



ROLL UP

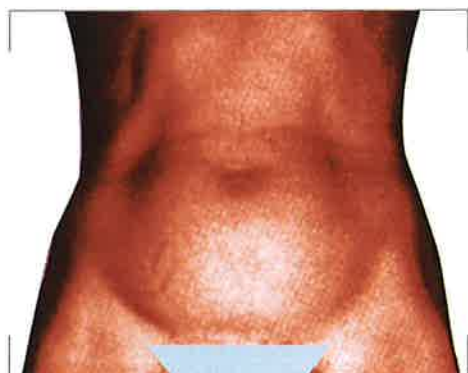
30%



ROLL OUT

10%

Résultats / Results  
32 Lipomodelage™  
BY ENDERMOLOGIC®



0



14



42 AGE 39 ans / years

ROLL IN 40%

ROLL UP 30%

ROLL OUT 30%

Résultats / Results  
33 Lipomodelage™  
BY ENDERMOLOGIE®



0

14



AGE

35 ans / years



ROLL IN

50%



ROLL UP

30%



ROLL OUT

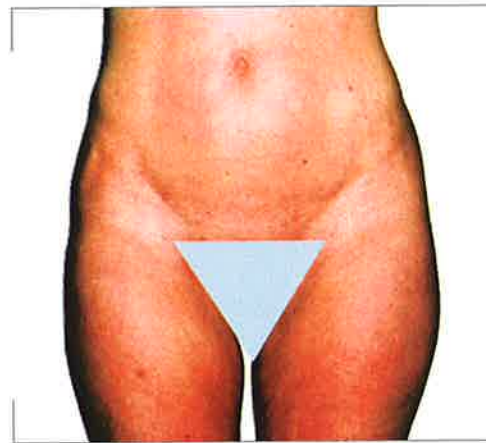
20%

Résultats / Results  
**Lipomodelage™**  
BY ENDERMOLOGIE

34



0



14



AGE

50 ans / years



ROLL IN

40%



ROLL UP

30%



ROLL OUT

30%

Résultats / Results  
**Lipomodelage™**  
BY ENDERMOLOGIE

35



0

26

42  
43

AGE

55 ans / years

50

ROLL IN

50%

25

ROLL UP

25%

25

ROLL OUT

25%

Résultats / Results  
36 Lipomodelage™  
BY ENDERMOLLOGIE®



0



12

AGE 24 ans / years

ROLL IN 40%

ROLL UP 40%

ROLL OUT 20%

Carine

Résultats / Results  
**Lipomodelage™**  
BY ENDERMOLOGIE®

37



0

12



AGE

32 ans / years



ROLL IN

50%



ROLL UP

30%



ROLL OUT

20%